



Penzance Sailing Club
Albert Pier, Penzance
TR18 2LL
01736 364989
www.pzsc.org.uk

PASAB

(Penzance Around Scilly And Back)

Sailing Instructions (SIs)

Friday 24th to Monday 27th July 2026

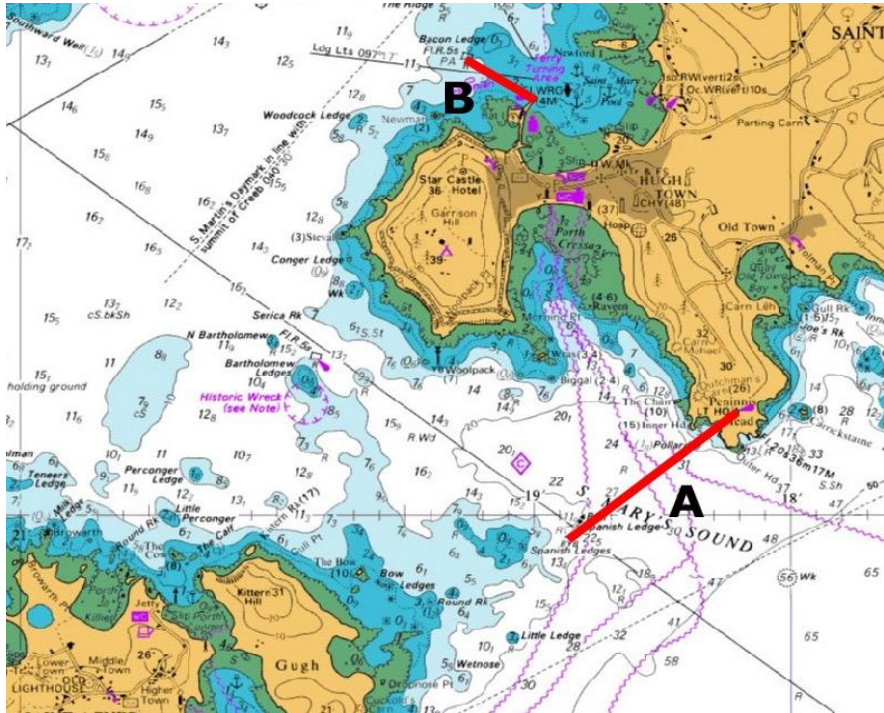
Monohulls Racing Under RYAYTC and IRC ratings

Multihulls Racing Under MOCRA ratings



St Mary's Finishing Lines

The diagrams illustrate the approximate positions of the finish lines:



The information on this page does not in any way change the Sailing Instructions.

A is the finishing line for Leg 1 AND finishing line 'A' for Leg 2

B is the finishing line 'B' for Leg 2

Reporting

Reporting in with finishing times is **MANDATORY** see Section 3.1 for further details. For all Legs report times, preferably by Text, to the Communication Officer: Colin Wilson Mobile No: 07740 427785 (07706 480631 if mobile disabled) - TEXT ONLY after 22:00

Communication with committee boat should be by: WhatsApp or Text (07968 169547) or VHF Channel 8

PASAB 2026 - SAILING INSTRUCTIONS

1.0 - RULES

1.1 - Racing will be governed by the rules as defined in 'The Racing Rules of Sailing 2025-2028 (RRS) governing offshore racing category 4 applies with additions, see S.I. 2.3.

1.2 The RYA prescriptions apply

1.3 Rules will be changed as follows:

- (a) 26 - to allow staggered starts;
- (b) 26 - to allow VHF broadcasts in place of flag signals;
- (c) 28, A4 & A5 - to allow a start window and to score boats DNS without a hearing;
- (d) 29 - to replace individual recalls by fixed time penalties;
- (e) 32 - to allow shortening course to be signalled by VHF radio channel 8;
- (f) 33 - to allow course changes to be signalled by VHF radio channel 8;
- (g) 35, A4 & A5 - to allow finish time limits and to score boats DNF without a hearing;
- (h) 62 - to limit a boat's right to redress.
- (i) 52 – the use of Autopilots for all competitors

1.4 The IRC Rules 2026 Parts A, B and C will apply.

1.5 IRC rules will be changed as follows: 22.4 - to remove the restriction on crew numbers and weight.

1.6 World Sailing Offshore Special Regulations (OSR) 2025-2028 will apply. The category will be specified by the Organising Authority of the race and described in the sailing instructions.

1.7 Local regulations will apply concerning safe navigation in close proximity of commercial and military vessels restricted in their ability to manoeuvre, and dive vessels.

Full details will be given in the sailing instructions for each race.

1.8 In the event of conflict between the notice of race and the sailing instructions then the sailing instructions shall prevail.

2.0 – SAFETY & SPECIAL REGULATIONS

2.1 – Each competitor is responsible for deciding whether they put to sea.

2.2 - The Organizing Authority may reject or cancel the entry of a boat which in its view is un-seaworthy.

2.3 – Entries Legs 1 & 3 must comply with World Sailing Appendix F Category 3 Monohulls/Multihulls with Liferaft and, for entries only to Leg 2 must comply to World Sailing Appendix F Category 4 Monohulls/Multihulls with Liferaft. It is requirement for all competing boats that the liferaft is capable of accommodating all members of the crew during each leg.

World Sailing Offshore Special Regulations 2025-2028 can be downloaded from World Sailing at <https://www.sailing.org> <https://www.sailing.org/inside-world-sailing/rules-regulations/offshore-special-regulations/>

It is recommended that a **Check list** is used appropriate to the highest category you expect to race under (Category 3 if entering all 3 Legs of PASAB, category 4 if entering

Leg 2 only). All checklists are available at World Sailing - <https://www.sailing.org/inside-world-sailing/rules-regulations/offshore-special-regulations/>

2.4 - Each participating boat shall be insured with valid third-party liability insurance with a minimum cover of £5,000,000 per incident or the equivalent. Competitors will be required to sign a declaration to this effect when entering.

3.0 - REPORTING

3.1 - Each boat shall report (preferably by text) its arrival and finish time to the **Communications Officer, Colin Wilson (07740 427785)**, within one hour of finishing each leg, Leg's 1 & 2 St Mary's, Leg 3 Penzance, except any boat that finishes between 00:00 and 09:00 hours shall report between 09:00 and 10:00 on the same day. A boat which infringes 3.1 will be disqualified from that leg without a hearing. **N.B. TEXT ONLY after 22:00**

3.2 – A boat that does not start a leg of the event shall report this fact to the appropriate Communications Officer no later than the start signal. A boat that retires on any leg of the event shall report this fact to the Communications Officer no later than 1 hour after their leg time limit.

3.3 – Each boat shall inform the Organising Authority of the names of all those on board the boat and emergency shore contact details for each crew member via the form provided with the Entry Form. **This shall be done before 12 noon on Friday 24th July 2026.**

Any crew changes for Legs 2 and 3 shall be reported to the Communication Officer before the start of the respective race.

4.0 - COMMUNICATION WITH COMPETITORS

4.1 -There will be No briefing but a WhatsApp group will be created with all skippers or a designated person about 8 hours before the start time. Any skipper that prefers not to use WhatsApp can be contacted or contact the Committee Boat by Text (07968 169547).

From 90 minutes before the start of the race and it's duration VHF channel 8 will be the only means of communication

4.2 - Any changes to these Sailing Instructions will be announced on the WhatsApp group or text and displayed on the notice board at the front of our clubhouse directly outside the front door.

4.3 – Any changes to these Sailing Instructions made for Legs 2 and 3 will be posted on the Harbour masters' noticeboard in St Mary's harbour. Flag L will not be displayed, however this change will be included in the broadcast in line with SI 4.6.

4.4 – Signals made ashore before the start of Leg 1 will be flown on the Penzance Sailing Club (PzSC) clubhouse flagpole and/or the Committee start boat.

4.5 – Before and during the start of Legs 2 & 3 signals may be flown by the committee boat and/or start boat.

4.6 - In the 90 minutes leading up to the start of legs 1,2 & 3 the Committee Boat will use VHF channel 8 to make announcements. These announcements may

affect the course and/or the starting arrangements. A boat's failure to receive these announcements will not be accepted as grounds for redress. This alters RRS 62

5.0 – CREW ON BOARD

5.1 – For the purpose of RRS Rule 48, Limitation on Equipment and Crew, each leg of the race will be considered a separate race.

6.0 – HANDICAPPING and TIMINGS

6.1 – The RYAYTC Scheme as operated by SWYTC.org.uk will be used. Competitors shall produce a copy of their 2026 RYAYTC Certificate, prior to the deadline for race entries.

6.2 - Entrants under IRC shall produce a copy of their 2026 IRC Certificate (endorsed or unendorsed), prior to the deadline for race entries.

6.3 – All competitors are responsible for recording their finishing times at the appropriate finishing line and the end of each leg. Timing should be recorded using the time on GPS (BST).

7.0 – STARTING SIGNALS FOR LEG 1

7.1 – Start Signals will be as follows:

IC flag 'C' Up + 1 sound signal	Monohull 5 minute - warning signal
IC flag 'P' Up + 1 sound signal	Monohull 4 minute - preparatory signal
IC flag 'P' Down + 1 long sound signal	Monohull 1 minute - preparatory flag down
IC flag 'C' Down + 1 sound signal	Monohull start - class flag down
IC flag 'M' Up + 1 sound signal	Multihull 5 minute - warning signal
IC flag 'P' Up + 1 sound signal	Multihull 4 minute - preparatory signal
IC flag 'P' Down + 1 long sound signal	Multihull 1 minute - preparatory flag down
IC flag 'M' Down + 1 sound signal	Multihull start - class flag down

7.2 - Before the starting signal, the race committee may for any reason **postpone** (display flag 'AP', 'AP' over 'H', or 'AP' over 'A', with two sounds) or **abandon** the race (display flag 'N' over 'H', or 'N' over 'A', with three sounds)

7.3 STARTING LEGS 2 & 3

Starts will be self-timed and the start line for both legs will be between Bacon Ledge port hand bouy FL (4) R.5s (49°55.22'N 06°-19.26'W) and Newman starboard hand bouy FL (2) G.5s (49°55.14'N 06°19.27'W) crossed from East to West.

There are a number of reefs in the vicinity of this start line; competitors are advised to familiarise themselves with the extent of these reefs on the appropriate chart.

7.4 – In the absence of a mark of the course or a finish line mark, competitors shall use the corresponding mark's charted position.

8.0 – PENALTIES

8.1 - Premature Starters – All Legs

A boat which crosses the start line in the direction of the course after its preparatory signal and before its start will be awarded a 15 minute corrected time penalty. This alters RRS 29.1. The Organising Authority will be the sole arbiter of this rule. No protest will be considered for infringement of 7.1. This alters RRS 60.1.

8.2 - Infringements of Rules of Part 2

A boat which acknowledges infringing a rule of Part 2 of the RRS shall be penalised by the addition of 10 minutes to her corrected time for the appropriate leg for each infringement. This alters RRS 44.

9.0 – Leg 1 (Penzance – St Mary’s)

9.1 – Start Times:

Friday 24 July 2026:

Monohulls – 19:00

Multihulls – 19:05

9.2 – Start line will be between two orange cylindrical buoys approximately east of Penzance Lighthouse Pier.

9.3 – Course:

The course to be sailed will be signalled by the start boat displaying the corresponding Numeral Pennant (e.g. 'Numeral Pennant 2' signals 'Course 2').

Leg 1 - Course 1

Proceed to Lowlee east cardinal buoy to port.

Mountamopus south cardinal buoy to starboard.

Wolf Rock lighthouse to starboard.

St Mary's, Isles of Scilly via St Mary's Sound leaving St Mary's to starboard at all times.

Leg 1 – Course 2

Proceed to Lowlee east cardinal buoy to starboard.

Wolf Rock Lighthouse to starboard.

St Mary's, Isles of Scilly via St Mary's Sound leaving St Mary's to starboard at all times.

Leg 1 – Course 3

Proceed to Lowlee east cardinal buoy to starboard.

St Mary's, Isles of Scilly via St Mary's Sound leaving St Mary's to starboard at all times.

9.4 – Finish Line will be defined as a line from Penninis Light to Spanish Ledges east cardinal buoy, with that cardinal as a western limit. This line shall be passed in a northerly direction. Both the shoreline and Spanish Ledges have outlying reefs; competitors are advised to familiarise themselves with the extent of these reefs on the appropriate chart.

10.0 - LEG 2 (Around the Islands)

10.1 – Start Times:

Sunday, 26 July 2026

Monohulls - 09:30

Multihulls – 09:35

10.3 – Courses:

The course to be sailed will be given by WhatsApp to competitors 1 hour before the scheduled start times. If they are in any doubt competitors can radio the committee boat on VHF channel 8.

Finish Line A

As Leg 1 finishing line – see 9.4

Finish Line B

Between St Mary's pier head and Bacon Ledge red can buoy. Bacon Ledge has an outlying reef; competitors are advised to familiarise themselves with the extent of this reef on the appropriate chart.

Leg 2 – Course 1 (Around all Islands, starboard hand)

Proceed via St Mary's Sound.

Leave St Mary's to port and Spanish Ledges east cardinal buoy to starboard

Then around the Isles of Scilly leaving all rocks and islands charted as dry at MLWS, to starboard.

Finish Line A

Leg 2 – Course 2 (Around all Islands, port hand)

Proceed via St Mary's Sound.

Leave St Mary's to port and Spanish Ledge east cardinal buoy to starboard.

Then around the Isles of Scilly leaving all rocks and islands charted as dry at MLWS, to port.

Finish Line A

Leg 2 – Course 3 (Southern Islands, starboard hand)

Proceed from the start line via St Mary's Sound.

Leave St Mary's to port and Spanish Ledges east cardinal buoy to starboard.

Then around the Isles of Scilly leaving all rocks and islands charted as dry at MLWS to starboard until Steeple Rock west cardinal buoy.

Steeple Rock west cardinal buoy to starboard.

Spencer's Ledge south cardinal buoy to port.

Finish Line B

Leg 2 – Course 4 (Southern Islands, port hand)

Proceed via The Road.

Spencer's Ledge south cardinal buoy to starboard.

Steeple Rock west cardinal buoy to port.

Then around the Isles of Scilly leaving all rocks and islands charted as dry at MLWS to port.

Finish Line A

Leg 2 – Course 5 (Northern Islands, starboard hand)

Proceed via The Road.

Spencer's Ledge south cardinal buoy to starboard.

Steeple Rock west cardinal buoy to starboard.

Then around the Isles of Scilly leaving all rocks and islands charted as dry at MLWS to starboard.

Finish Line A

Leg 2 – Course 6 (Northern Islands, port hand)

Proceed via St Mary's Sound.

Leave St Mary's to port and Spanish Ledge east cardinal buoy to starboard.
Then around the Isles of Scilly leaving all rocks and islands charted as dry at MLWS to port until Steeple Rock west cardinal buoy.

Steeple Rock west cardinal buoy to port.

Spencer's Ledge south cardinal buoy to port.

Finish Line B

Leg 2 – Course 7 (St Mary's, starboard hand)

Proceed via Crow Sound.

Leave St Mary's and all the drying rocks of St Mary's to starboard including the Gill Stone but excluding Crow Rock and Crow Bar.

Finish Line A

Leg 2 – Course 8 (St Mary's, port hand)

Proceed via St Marys Sound.

Leave St Mary's and all the drying rocks of St Mary's to port including the Gill Stone but excluding Crow Rock and Crow Bar.

Finish Line B

11.0 - LEG 3 (St Mary's - Penzance)

11.1 – Start Times:

Monday, 27 July 2026

Monohulls - 09:30

Multihulls - 09:35

11.2 – Starts will be self-timed and the start line for leg 3 will be between Bacon Ledge port hand bouy FL(4) R.5s (49°55.22'N 06°-19.26'W) and Newman starboard hand bouy FL(2) G.5s (49°55.14'N 06°19.27'W) crossed from East to West.

There are a number of reefs in the vicinity of this start line; competitors are advised to familiarise themselves with the extent of these reefs on the appropriate chart.

11.3 – Course:

Proceed via St Mary's Sound.

Leave St Mary's to port and Spanish Ledge east cardinal buoy to starboard.

Wolf Rock Lighthouse to port.

11.4 – Finish line will be formed by a transit extending from Penzance St Mary's Church Tower (conspic) through Penzance Pier Lighthouse as far as a transit of Gulval Church and Western Cressar south cardinal beacon (a distance of 650 metres from Penzance Lighthouse). **Please beware of depth of water around Cressar beacon.**

12.0 – TIME SLIPS & DECLARATIONS

12.1 – No Time slips or declarations need to be submitted online. For all Legs competitors must send their finish times, preferably by Text, to the Communication Officer: Colin Wilson. Mobile No: 07740 427785 (07706 480631 if mobile disabled) - TEXT ONLY after 22:00

12.2 – Failure to notify finish times will result in competitors being recorded a DNC in all legs.

13.0 – PROTESTS

13.1 - Protests for each leg shall be submitted to a member of the Committee Boat by WhatsApp or Text (07968 169547) by the following times:

Leg 1 – 18:00, Saturday 25 July 2026

Leg 2 – 19:00, Sunday 26 July 2026

Leg 3 – 11:00, Tuesday 28 July 2026

14.0 - TIME LIMITS

14.1 - Times Limits for each leg will be as follows (RYAYTC handicap corrected time):

Leg 1 - 18 hours

Leg 2 - 7 hours

Leg 3 - 18 hours

Note: Individual Time Limit =
$$\frac{\text{Individual Leg Time Limit}}{\text{Allocated RYAYTC}}$$

14.2 - A boat that fails to finish before the Time Limit or that can demonstrate it was unable to finish before the time limit, provided that it has not retired prior to that time, will not be excluded from the overall positions. Such boats will be allocated a corrected time based on RYAYTC as follows:

Leg 1 – 20 hours

Leg 2 – 7 hours 45mins

Leg 3 – 20 hours

14.3 – A boat can demonstrate that it was unable to finish as follows: By recording its position at a set time and demonstrating that traveling the straight line route along the race course from that position at a speed of 5 knots it would be unable to finish in the time remaining until her time limit.

15.0 - SCORING

15.1 – Overall results will be based on an aggregated points scored over all legs.

15.2 - Any boat disqualified from or failing to finish any one leg, except as allowed in 14.2, is automatically eliminated from the overall race trophies. However, a boat may still qualify for those individual legs from which it was not disqualified.

16.0 - LIABILITY

- The race organisers shall not be liable for any loss, damage, death or personal injury
- howsoever caused to the owner/competitor, his skipper or crew, as a result of their taking part in the race or races. Moreover, every competitor warrants the suitability of his boat for the race or races.
- The safety of a boat and its entire management, including insurance, shall be the sole responsibility of the owner/competitor who must ensure that the boat is fully found, thoroughly seaworthy, and manned by a crew sufficient in number and experience, and who are physically fit to face bad weather.
- The owner/competitor must be satisfied as to the soundness of the hull, spars, rigging, sails and all gear.
- He / She must ensure that all safety equipment is properly maintained, stowed and in date and that the crew know where it is kept and how it is to be used.

ALLOCATION OF TROPHIES AND PRIZES

OVERALL TROPHIES

- Manzi Trophy – Fastest Corrected Time overall (RYAYTC)
- Row Trophy – 1st Place overall Penzance-based monohull (RYAYTC)
- Cobbler's Last - Last place overall Penzance-based monohull (RYAYTC)
- Christopher Laughton – 1st place overall multihull (MOCRA)
- COGS Trophy – 1st place overall COGS entrants (COGS handicap)
- IRC Trophy – 1st place overall (IRC)
- Petit Bateau Trophy – 1st place overall double-handed (elapsed time)

SPECIAL TROPHIES

- Colin Harrison Cup – Youngest individual to compete in each race
- Lanxon Trophy - Merit and Overall Effort

CLASS TROPHIES

- Penzance Sailing Club Shield - Fastest Class 1 monohull (RYAYTC)
- Laity (Morrab Studio) Trophy - Fastest Class 2 monohull (RYAYTC)
- Robinson Travel Trophy - Fastest Class 3 monohull (RYAYTC)

LEG TROPHIES

- Porthcressa Trophy - Fastest Leg 1 monohull (RYAYTC)
- Penwith Trophy - Fastest Leg 1 multihull (RYAYTC)
- Venus Trophy - Fastest Leg 2 multihull or monohull (RYAYTC)
- Rainbow Trophy - Fastest Penzance-based Leg 2 monohull (RYAYTC)
- Bevill's PASAB Cup - Fastest Leg 3 monohull (RYAYTC)
- Tolvadden Trophy - Fastest Leg 3 multihull (MOCRA)

PzSC reserves the right to retain trophies at Penzance Sailing Club

GENERAL INFORMATION

Penzance Harbour

Outer harbour dries out.

Waiting moorings may no longer be available south of the lighthouse pier and east of Albert Pier so skippers should anchor or go alongside if tide permits.

The dock gate is normally open from HW-2 to HW+1.

Call 'Penzance Harbour' on VHF channel 12 or phone 01736 366113.

Newlyn Harbour

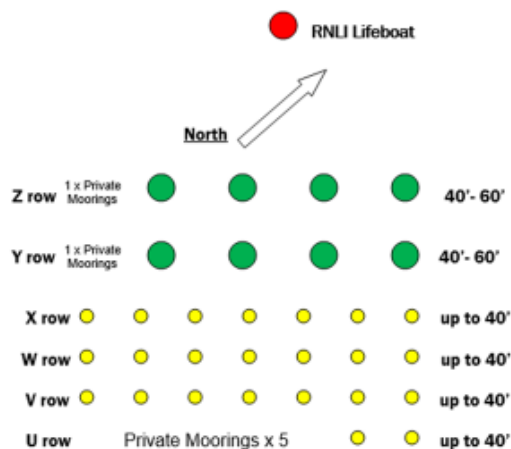
Newlyn caters mainly for fishing boats but may offer limited deep-water facilities.

The harbour is accessible at all states of tide.

Call 'Newlyn Harbour' on VHF channel 12 or phone 01736 362523

St. Mary's Harbour

- Call 'St. Mary's Harbour' on VHF channel 14 or phone 01720 422768
- The harbour speed limit is 3 Knots.
- Rafting – The visitor's moorings within the Harbour are suitable for rafting and this is a well recognised procedure, particularly in fine weather. Please make sure you have sought consent from the vessel already occupying the buoy and that both skippers should be happy with the arrangements before making fast.
- Boats can take the ground alongside at the south end of the main pier (behind the white line). Do not moor on the harbour steps as 24 hour access is required by the local ferries.
- Showers are available on the quay.
- Visitors' moorings **for yachts up to 40' are yellow, and for yachts 40' to 60' are green** and are found behind the lifeboat on the northern side of the harbour (see diagram below).



No visiting moorings are available in Porthcressa bay.

St Mary's

Pubs & Restaurants

There are a number of pubs which serve food on the main street in Hugh Town including the Mermaid and the Atlantic. There are also a number of restaurants mainly on the main street.

Money

There is no longer a cashpoint outside the Lloyds TSB branch on the main street however cashback is available from the Co-Op and Post Office.

Provisions

The main shop on St Mary's is the Co-op on the main street approximately 400m from the pier on the left.

PERSONAL INFORMATION – PASAB 2026

Boat Name: _____

Sail Number: _____

Time Limits (for programmed start times only)

Leg 1

Leg 2

Leg 3

PROGRAMME – PASAB 2026

Friday 24 July

Start of Leg 1 (Penzance - St Mary's)
19:00 – Monohulls, 19:05 – Multihulls,

Sunday 26 July

Start of Leg 2 (Around the Islands)
09:30 – Monohulls, 09:35 – Multihulls
From 19:00 – Social gathering in the Mermaid Inn.
21:00 – Results announced for Leg 2

Monday 27 July

Start of Leg 3 (St Mary's - Penzance)
09:30 – Monohulls, 09:35 – Multihulls,

Tuesday 28 July

11:00 – Protest Deadline for forms to be sent to a member of the Committee Boat by
WhatsApp or Text (07968 169547)

Competitors will be notified of the prize giving details during the race and before leg 3